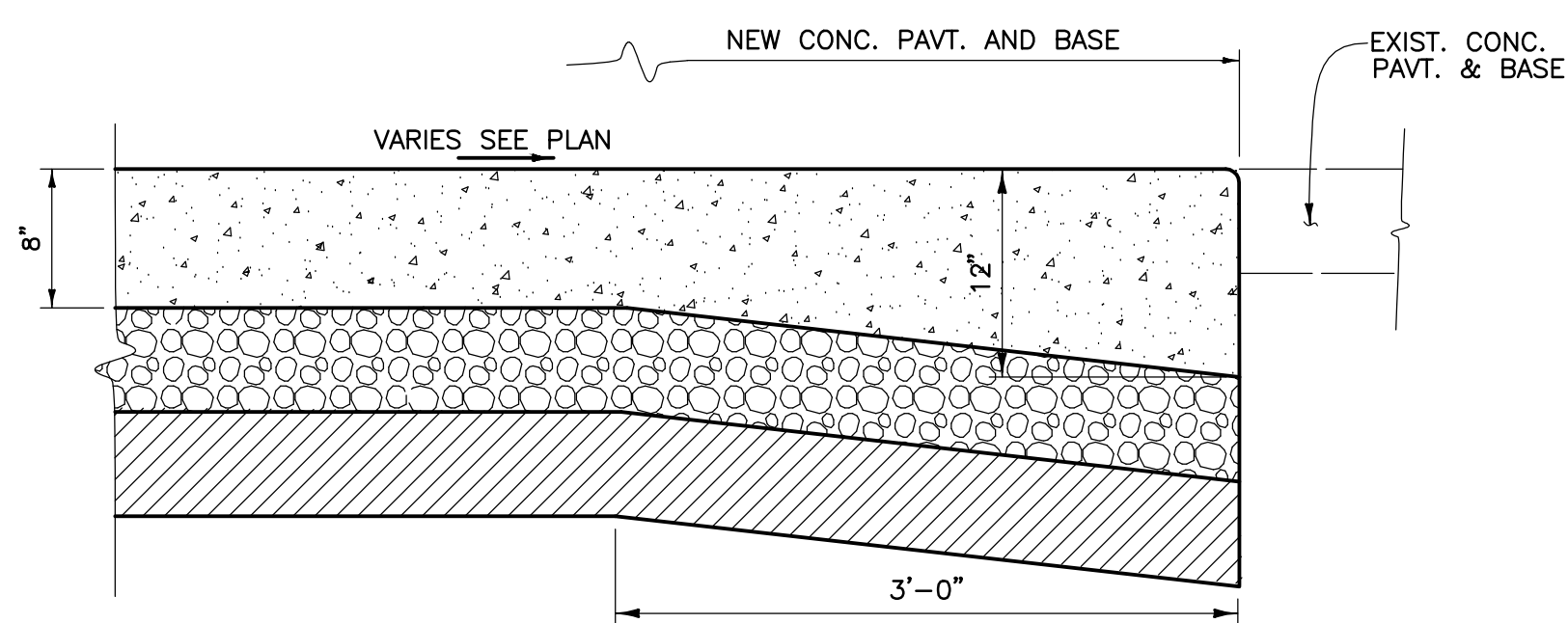


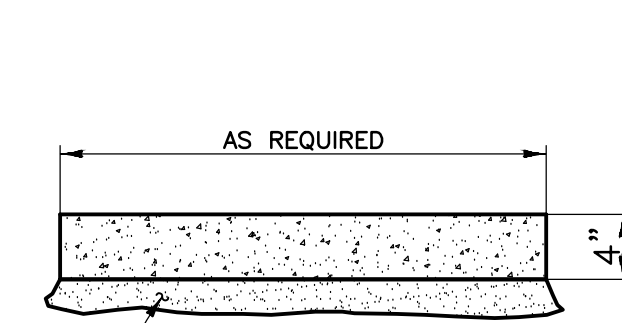
1 HEAVY DUTY CONCRETE PAVEMENT
C3.01

PAVEMENT STRUCTURE NOTES:

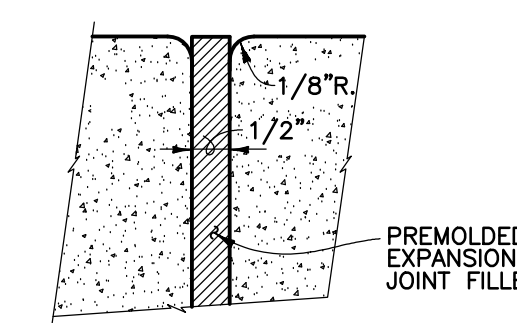
- 1 4000 PSI PORTLAND CEMENT CONCRETE PAVEMENT (8" THICK)
- 2 AGGREGATE BASE COURSE (4" THICK) COMPACTED TO 95% MAX. DENSITY IN ACCORDANCE W/ASTM D-698.
- 3 GEOTEXTILE FABRIC.
- 4 COMPACT TOP 12" OF SUBGRADE & ALL SELECT FILL MATERIAL TO 95 MAX. DENSITY IN ACCORDANCE W/ASTM D-698. IF SUBGRADE MATERIAL HAS A PLASTICITY INDEX GREATER THAN 25 THEN ADD 24 LBS OF HYDRATED LIME PER S.Y. TO TOP 12" OF SUBGRADE, STABILIZE, REGRADE & COMPACT.



2 JUNCTURE OF NEW CONC. TO EXISTING CONCRETE
C3.01 N.T.S.

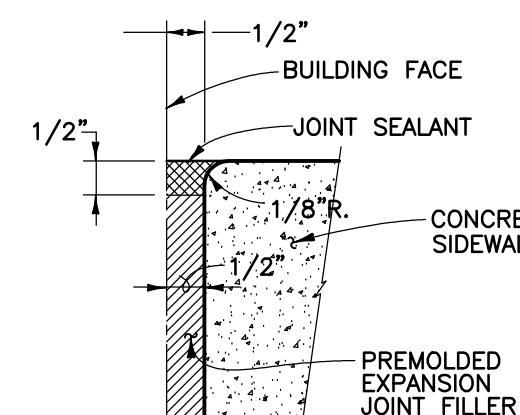


SECTION

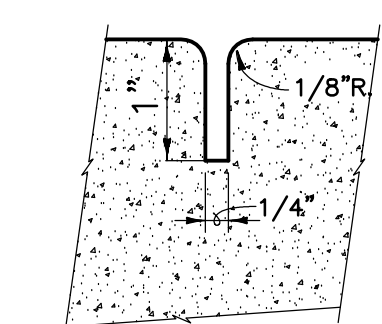


EXPANSION JOINT

NOTE: ALL SIDEWALKS TO BE REINFORCED WITH 6" X 6", NO. 10 X TO GA. W.W.F.

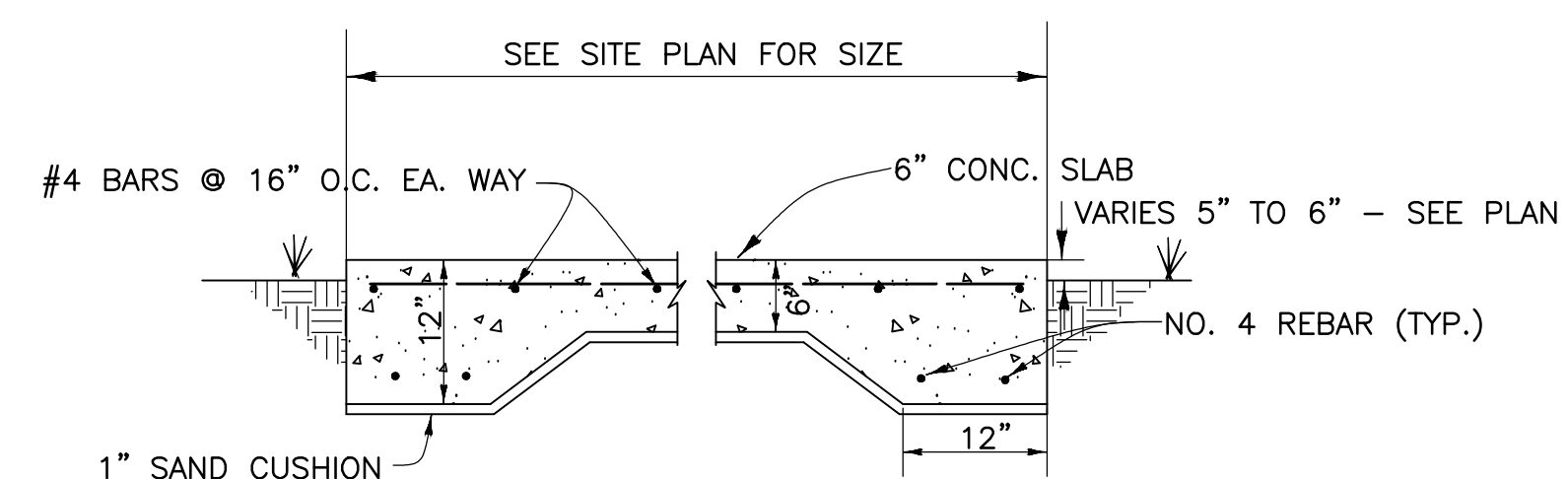


EXPANSION JOINT AT BUILDING



CONTRACTION JOINT

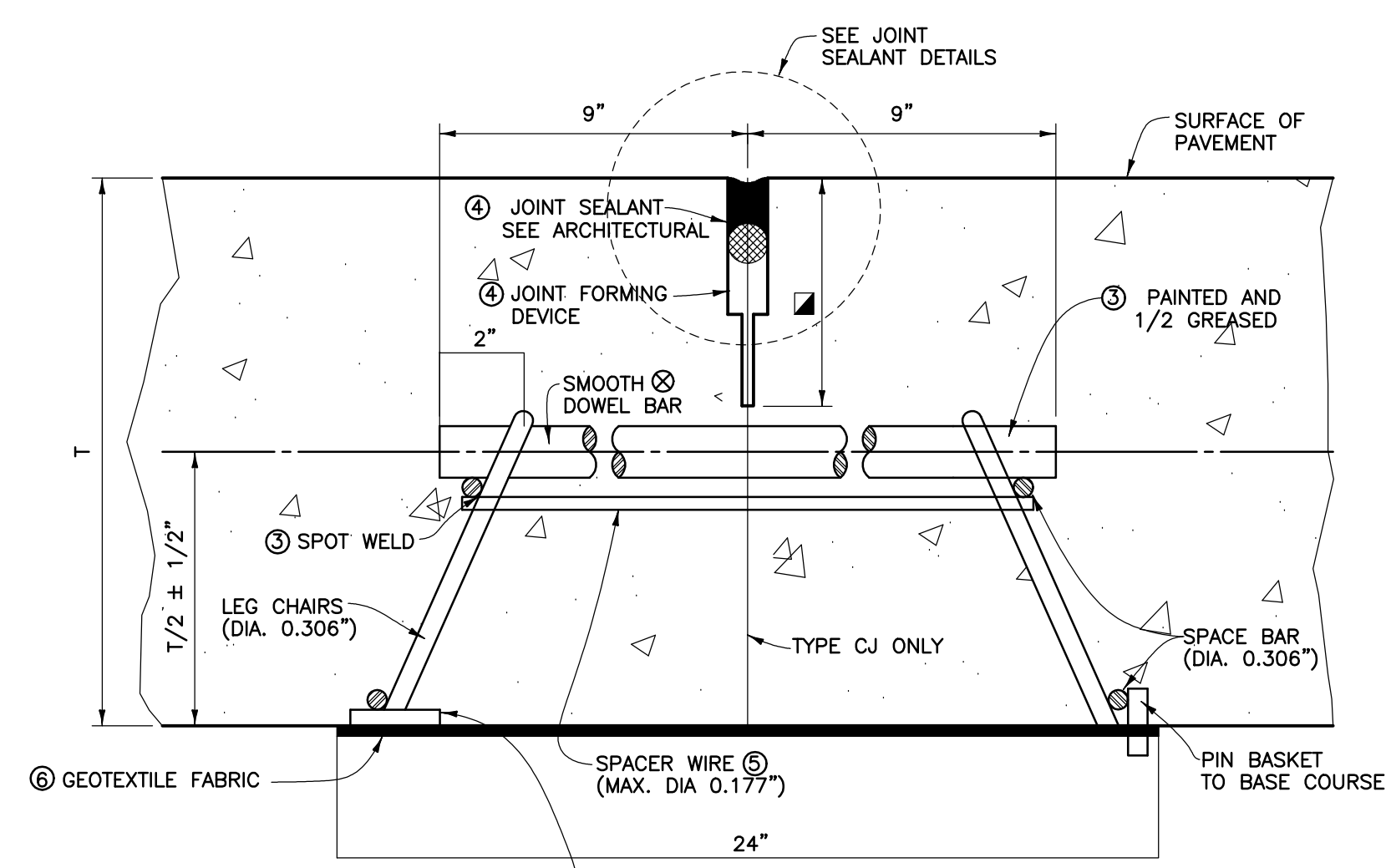
JOINT SPACING TO MATCH SIDEWALK WIDTH



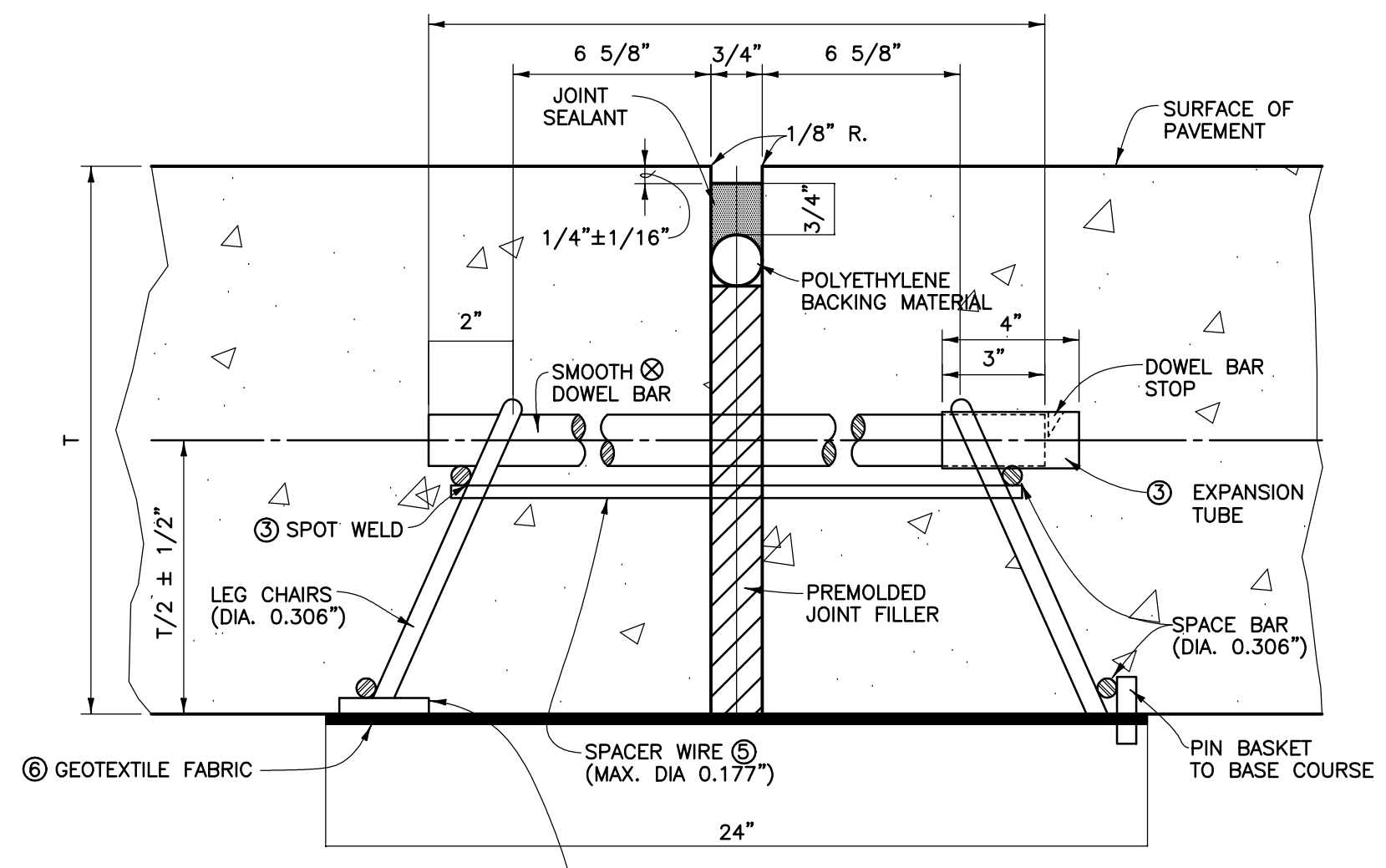
4 CONCRETE STOOP DETAIL
C3.01 N.T.S.

JOINT DETAIL NOTES

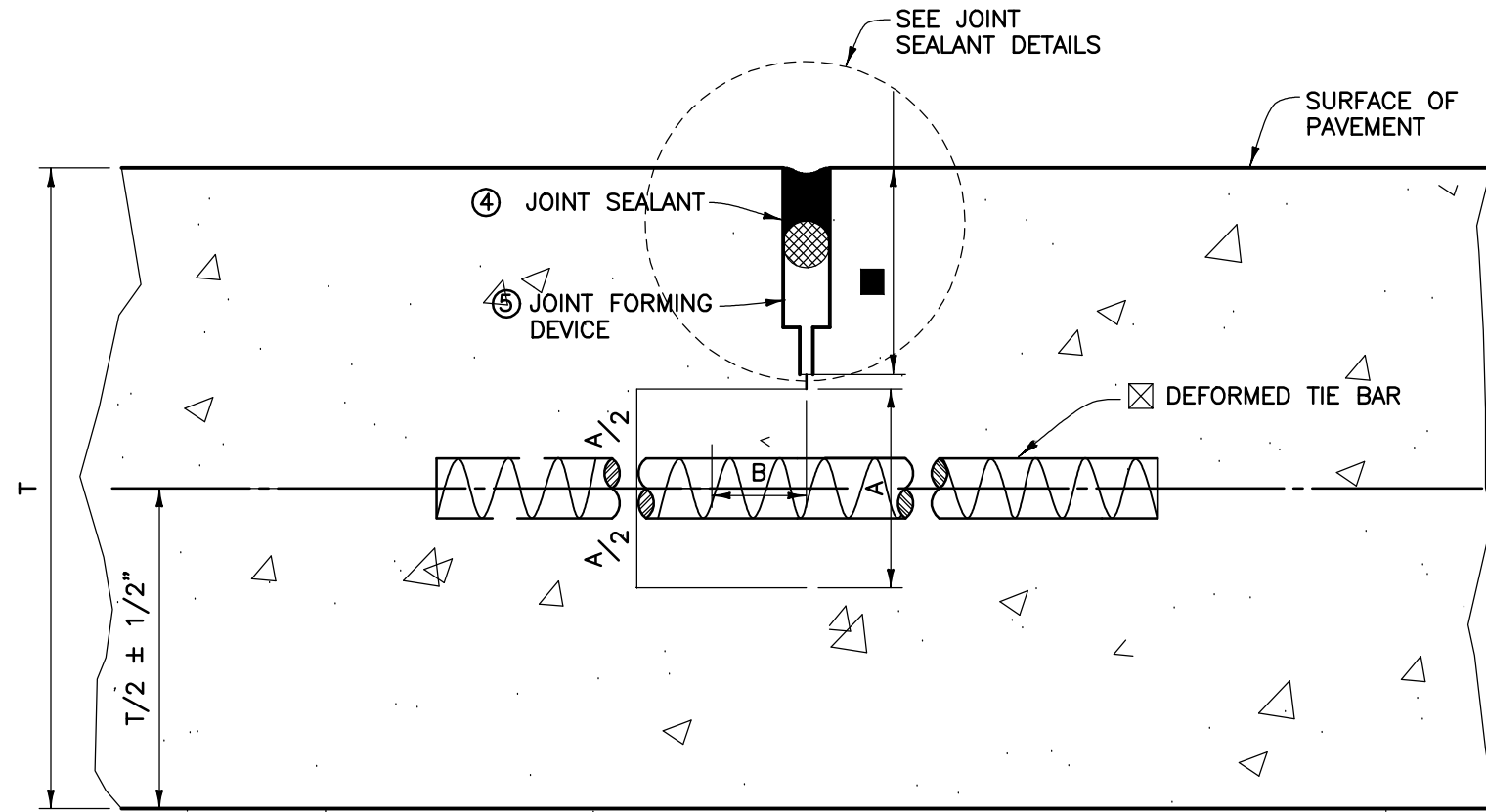
- REASONABLE TOLERANCE TO ALL DIMENSIONS WILL BE ALLOWED.
- SEE PLAN & PROFILE AND INTERSECTION SHEET FOR LOCATION OF JOINTS AND PAVEMENT TYPE.
- ON TYPE E.J. JOINTS, ARC WELD ALTERNATE ENDS OF DOWEL BARS TO DOWEL BASKETS AND PLACE EXPANSION TUBES ON ALTERNATE ENDS OF DOWEL BARS. PAINT ENTIRE DOWEL AND GREASE 1/2 OF DOWEL.
- TYPE LJ, DJ, OR CJ MAY BE FORMED AND SEALED BY ANY OF THE FOLLOWING METHODS LISTED BELOW. ALL JOINTS SHALL BE FORMED OR SAW CUT TO THE DEPTH SHOWN IN TABLE 1, AND SHALL BE CLEANED IMMEDIATELY PRIOR TO SEALING.
 - a. WHEN JOINTS ARE FORMED WITH A REMOVABLE FORMING DEVICE, JOINTS SHALL BE SEALED AS INDICATED. THE SEALANT RESERVOIR SHALL BE SAW CUT TO THE REQUIRED WIDTH AND DEPTH. (SEE JOINT SEALANT DETAIL A.)
 - b. WHEN JOINTS ARE FORMED BY SAWING, THE INITIAL CUT SHALL BE SAWS WITH A 1/8" MINIMUM WIDTH BLADE. SAWING SHALL COMMENCE AS SOON AS CONCRETE HAS HARDENED SUFFICIENTLY TO PERMIT CUTTING THE CONCRETE WITHOUT CHIPPING, SPALLING OR TEARING AND SHALL BE COMPLETED PRIOR TO DEVELOPMENT OF RANDOM CRACKING. THE SEALANT RESERVOIR MAY BE SAW CUT TO THE REQUIRED WIDTH AND DEPTH SIMULTANEOUSLY WITH THE FIRST CUT OR AT ANY TIME LATER. (SEE JOINT SEALANT DETAIL B.)
- EXCEPT AS NOTED BELOW, DOWEL BARS AND TIE BARS SHALL BE HELD IN PLACE BY SUPPORTS SIMILAR TO THE ONES SHOWN OR APPROVED EQUALS. APPROVED MECHANICAL PLACEMENT OF DOWEL BARS AND TIE BARS WILL BE ALLOWED WITH ALL PAVING METHODS. WHEN DOWEL BAR BASKETS ARE USED, SPACER WIRES THAT SPAN ACROSS JOINT SHALL BE CUT AND REMOVED AFTER STAKING BASKETS ARE IN PLACE.



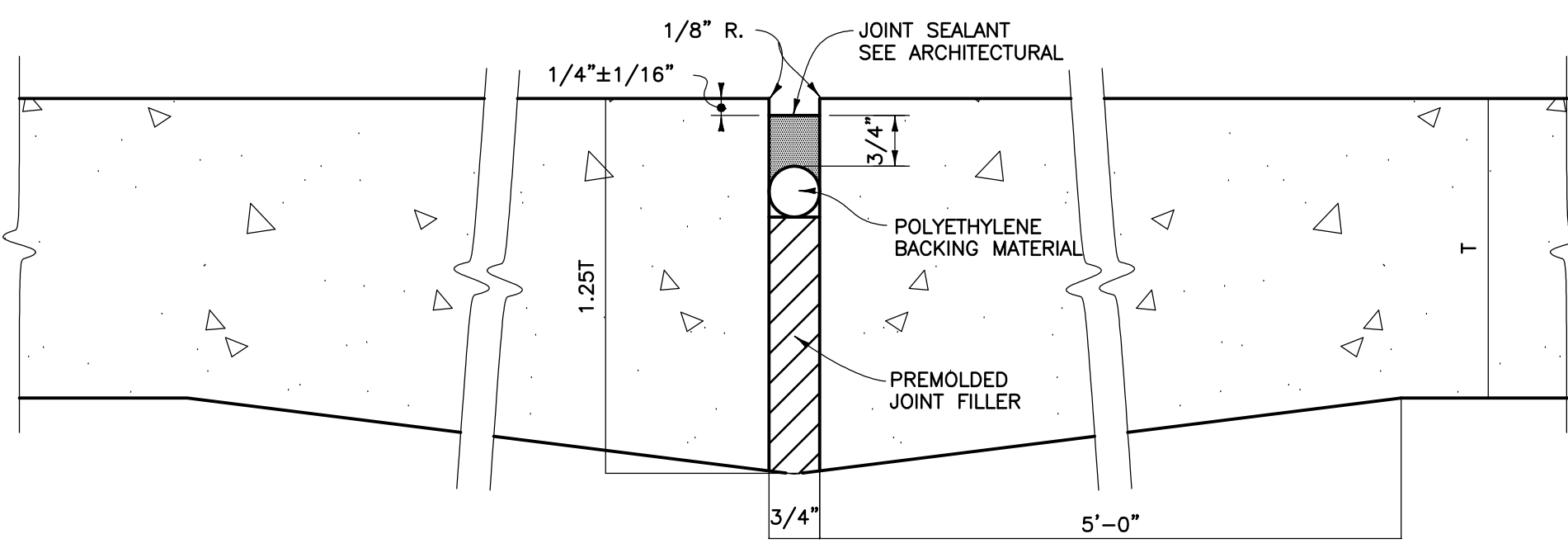
1 TRANSVERSE DUMMY JOINT OR CONSTRUCTION JOINT
■ & X SEE TABLE 1



3 TRANSVERSE EXPANSION JOINT
X SEE TABLE 1



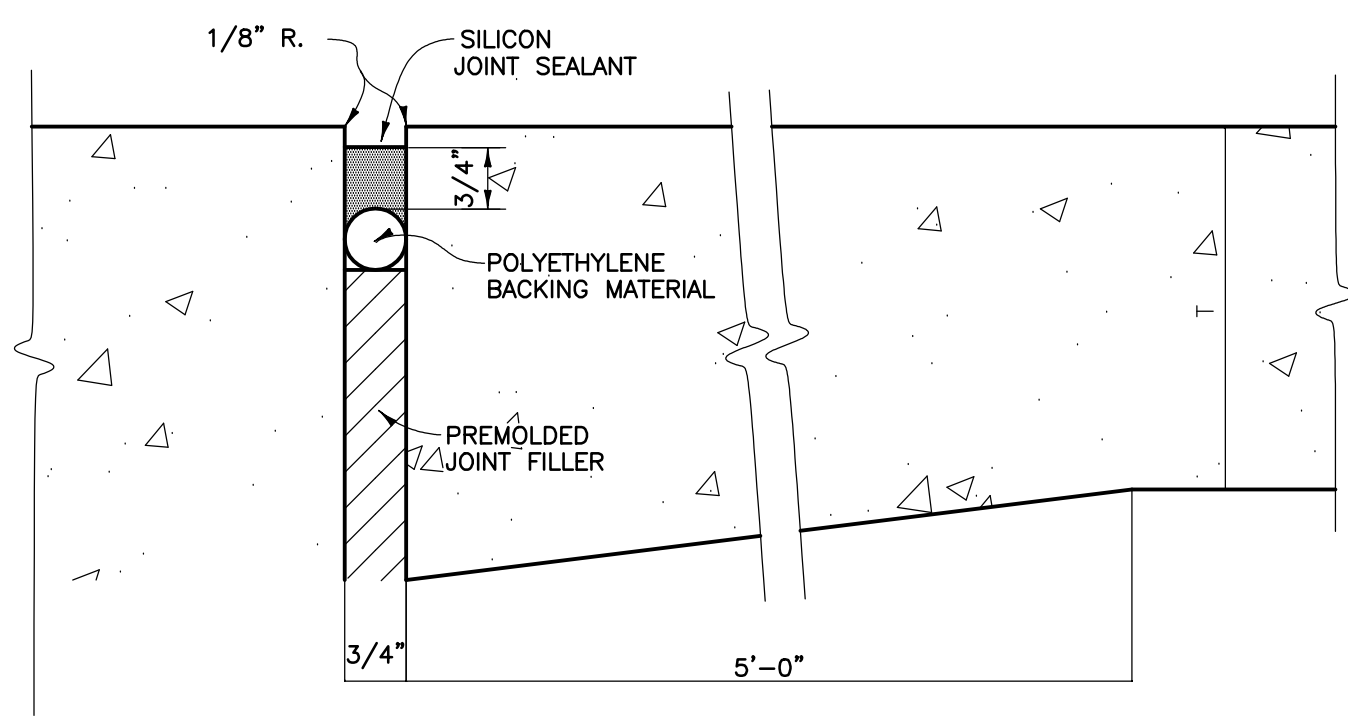
2 LONGITUDINAL DUMMY JOINT OR CONSTRUCTION JOINT
■ & X SEE TABLE 1



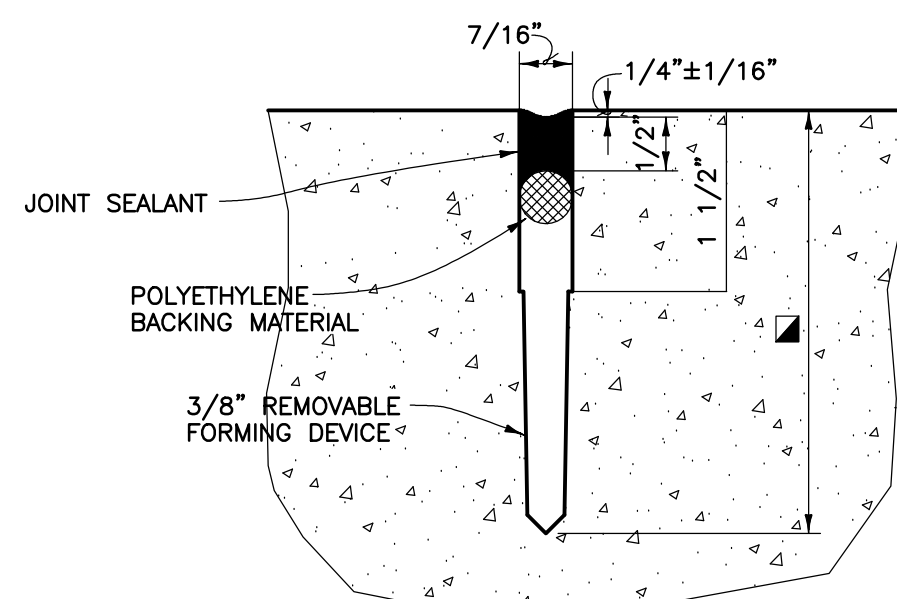
4 FREE EXPANSION JOINT

TABLE 1
(ALL DIMENSIONS ARE IN INCHES)

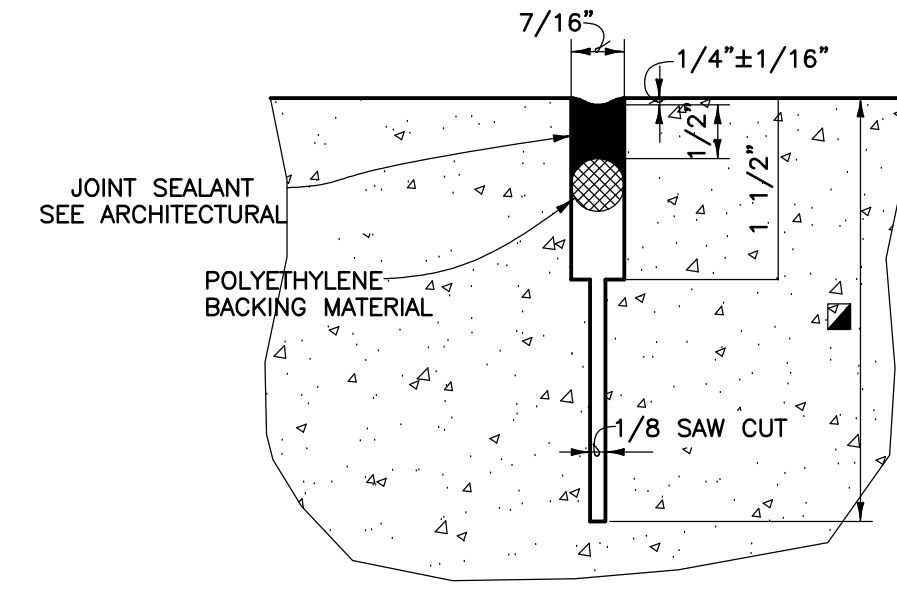
| PAVEMENT THICKNESS | SMOOTH DOWEL BARS | | | DEF. TIE BARS | | | DEPTH OF JOINT | | KEYWAY | |
|--------------------|-------------------|----------|---------|---------------|----------|---------|----------------|----|--------|-------|
| | Size | C Length | Spacing | Size | D Length | Spacing | DJ & CJ | LJ | A | B |
| 8 | 1 | 24 | 15 | 5/8 | 30 | 30 | 2-1/2 | 3 | 2-1/2 | 1-1/4 |



5 BUILDING OR STRUCTURE FREE EXPANSION JOINT

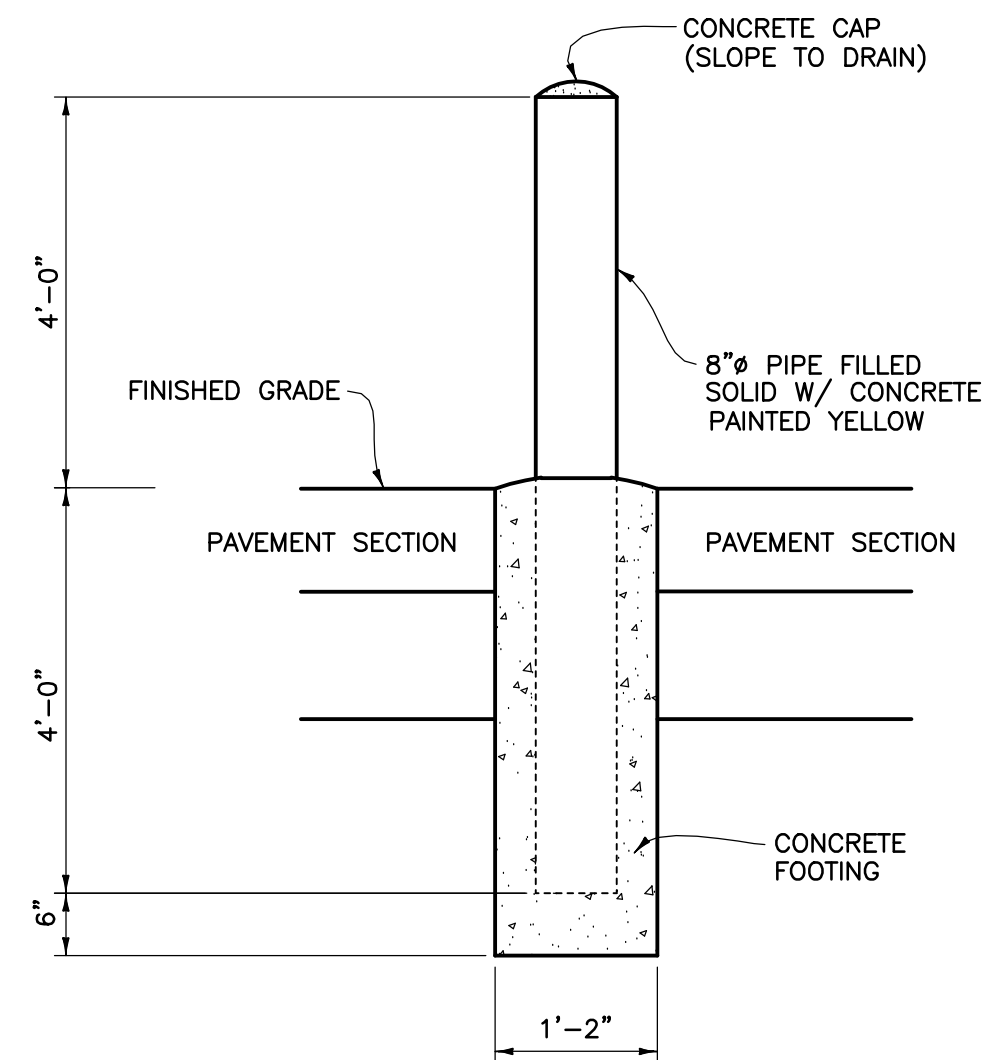


DETAIL A



DETAIL B

JOINT SEALANT DETAILS



5 BOLLARD DETAIL
C3.01 N.T.S.

CONSULTING ENGINEERS
3003 KNIGHT STREET, SUITE 120
SHREVEPORT, LOUISIANA 71105
phone: 318-425-7452 fax: 318-425-4022
www.AFJMc.com

ENGINEER: MARK W. SNOW, P.E.
LICENSE NO. 24203
11/03/2025

THESE DRAWINGS DO NOT INCLUDE NECESSARY COMPONENTS FOR CONSTRUCTION SAFETY. 25-033

DATE: NOV 2025
PROJECT NO.: 24-0059
FILE NAME:
DESCRIPTION:
PAVEMENT DETAILS